

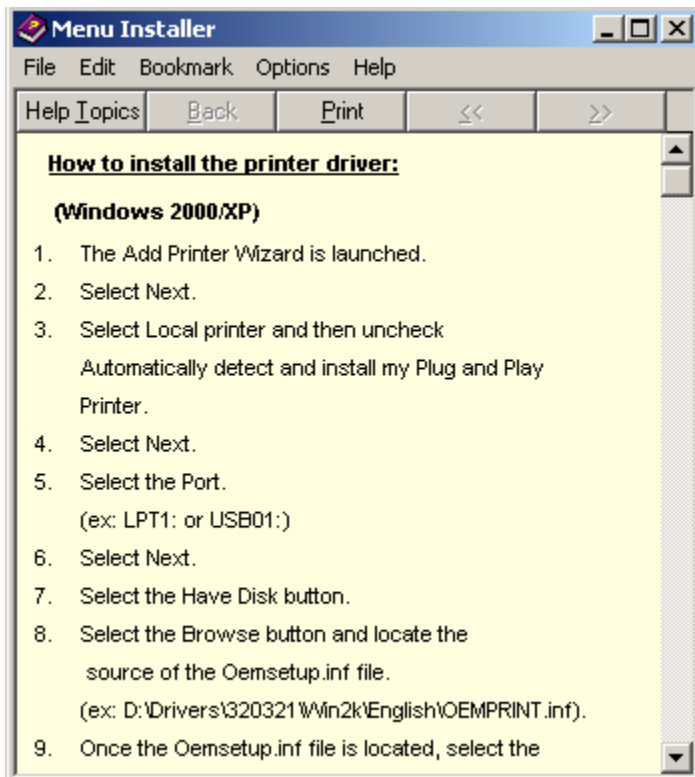
Okidata 320 Tag Printers in Windows 2000 and Windows XP

The Okidata 320 tag printers work a little different in Windows 2000 and Windows XP than they did in Windows 98. The correct driver and the correct form must be setup up following these steps:

(Note: We assume that you have already setup a tag form called OkiTag. If not see the Tag Form Setup on page 4 first. Also, if you have other OKI320 printers installed, delete them first.)

Install the Okidata 320 Printer driver

1. Put the OKI320 Installation CD that came with your printer into your CD drive D:
2. From the Windows Desktop click on **START | RUN** and enter `D:\Install.exe` and press enter.
3. After the Oki320 installation program accept the license agreement and click on **<Next>**.
4. Highlight **OKI320/1 TN** in the list and click on **<Continue>**
5. Click on the “Printer Driver” button.
6. Note the installation instructions shown on screen. Close this window when you have read it.



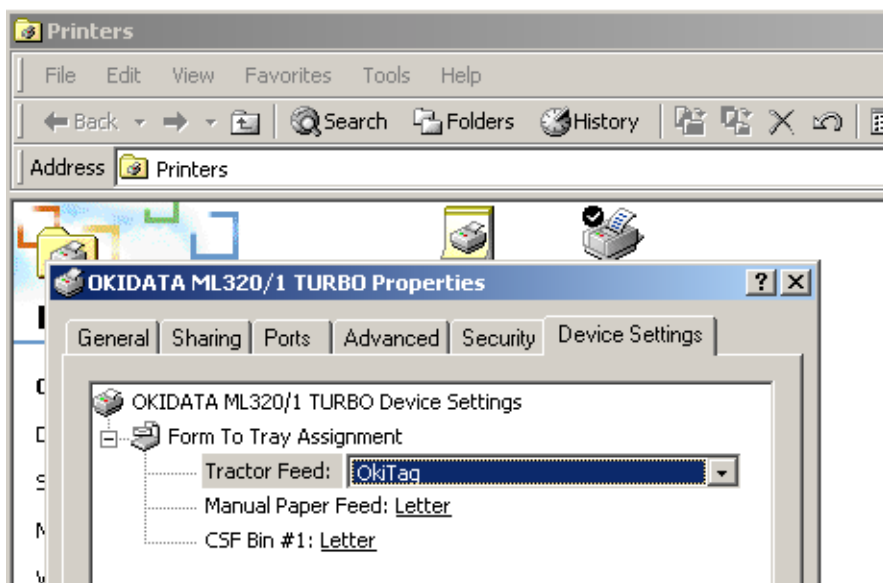
7. Follow the instructions above making sure to select “Have Disk” when you get to that screen
8. After selecting “Have Disk” browse to the `D:\Drivers\320321\Win2k\English\OEMPRINT` file and click on **OPEN**.



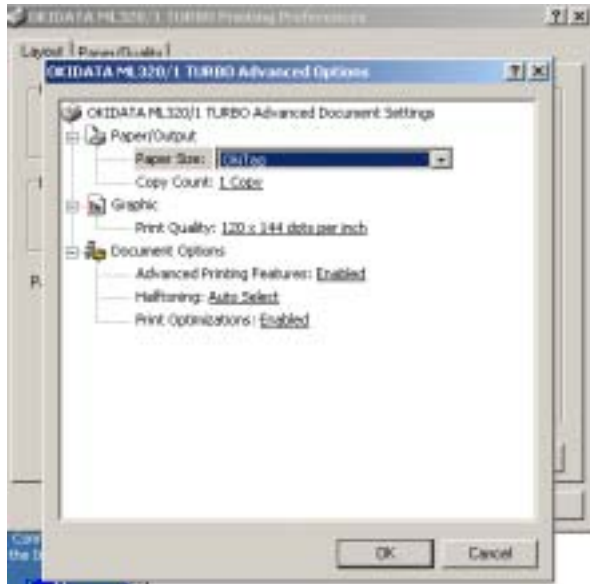
9. If prompted to “replace existing driver” select YES.
10. If prompted to accept the Microsoft Digital Signature select YES.
11. The Oki320/1 driver should now be installed.

Assign the Tag Form to the Printer

12. From the Windows Desktop select **START | SETTINGS | PRINTERS**
13. Right click on the Oki320/iTurbo printer that you just installed and select “Properties | Device Settings | Tractor Feed” and set it to “OkiTag” (see note above). Then save the settings and exit this part.



14. Right click on the Oki320/iTurbo printer again and this time select **Printing Preferences**. Click on the **Layout** Tab and then the **Advanced** button. Set the Paper Size to “OkiTag” and save and exit



Test your setup using FormPad

15. From the Windows Desktop select the FormPad program that comes with ProfitMaker.

16. From FormPad select FILE | OPEN and open the Tags.rtf file that is in the C:\Profit\Forms directory on your computer. (Note: We assume that Tags.rtf is the one that came with ProfitMaker and has not been changed. If you have modified Tags.rtf, reload it from the ProfitMaker CD into the C:\Profit\Forms subdirectory).

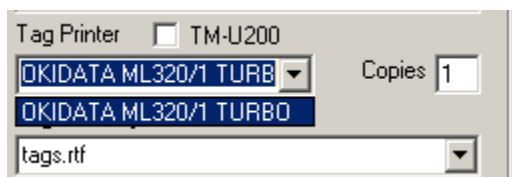
17. After Tags.rtf is opened from the File menu select Page Setup and verify the paper size is set to OkiTag as assigned in step 14 above. If not, go back to step 1 and try again.

18. Select the File menu and then Print to print the Tags.rtf file to the Oki320 printer. It should print exactly what is on the screen.

Assign Tags.rtf to you ProfitMaker Tags setup

19. Open the PMSetup program and select the Hardware button.

20. Set the Tag printer to Okidata ML320/1 Turbo, the copies to 1 and the form style to Tags.rtf



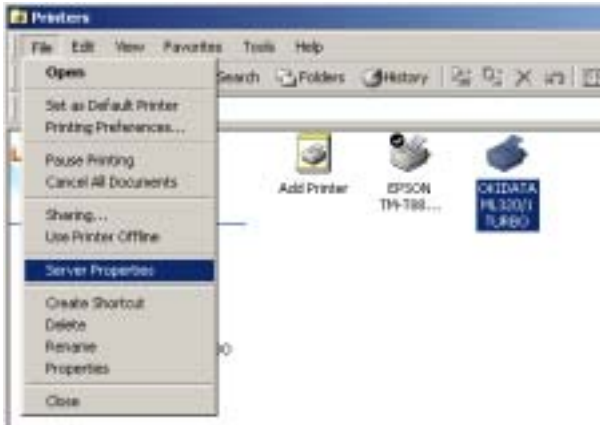
21. Save the settings and print tags from ProfitMaker (Training mode). Remember, tags printed before this setup is completed may not print correctly, only tags created after this setup will print using these settings.

Creating Custom Paper Sizes In Windows 2000 & Windows XP

This explains how to create Custom Page Sizes in the Windows 2000 and Windows XP environment and is taken from the Okidata Web site at <http://my.okidata.com>.

In order to print tags that are 4.13 x .5 inches on Okidata printers you must define a form size to match the tag. Follow these steps:

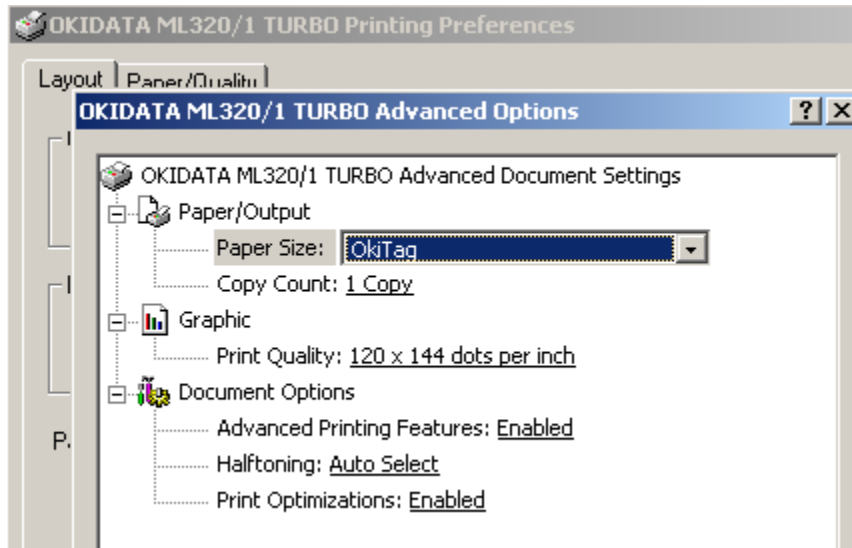
1. Go to **START | SETTINGS | PRINTERS** and highlight your Okidata 320/390 printer and select **FILE | SERVER PROPERTIES**



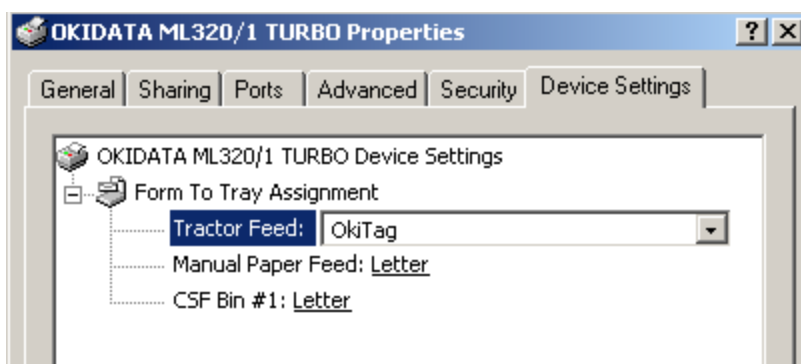
2. In the Print Server Properties window check the box "Create New Form", this will allow you to provide a name for the form - like Okitag. Next, set the form parameters under the Measurements section - like 4.13 for width and .5 for height. .Click Save Form and your newly created form will appear in the box below.



3. Now close the Window. Next right click on the ML320 printer icon and then click on Printing Preferences. Under the Layout Tab click on the Advanced button. Select the OkiTag form you just created from the drop down list under Paper Size. Click OK and Close the Printer Preferences window.



4. Next right click on the printer icon that you will use with the newly created OkiTag form. Click on Properties and then on the Device Settings tab. Select the OkiTag form from the drop down list and apply the changes.



NOTE: You must have an Okidata Windows 2000 or Windows XP printer driver installed or you will not see the OkiTag form you created in the list.